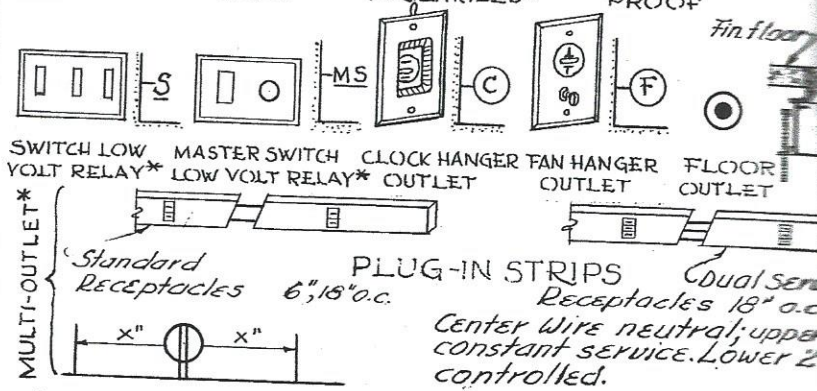


**GANG SIZE**

Gang	HORIZONTAL		VERTICAL	
	Height	Width	Height	Width
2	4 1/2"	4 9/16"	8 1/8"	2 3/4"
3	"	6 3/8"	11 3/4"	"
4	"	8 3/8"	15 3/8"	"
5	"	10"	19"	"
6	"	11 13/16"	22 3/8"	"

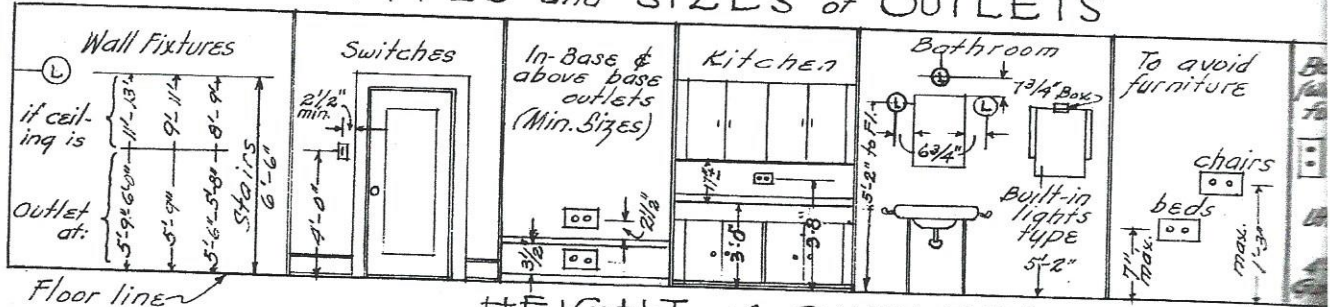
*Notes:*  
 Add 1 13/16" ea. added gang. Screws 1 13/16" o.c.  
 Add 3 5/8" ea. added gang.

*Plates made in plastic; brass 0.04, 0.06 in. thick; stainless steel 0.04"*

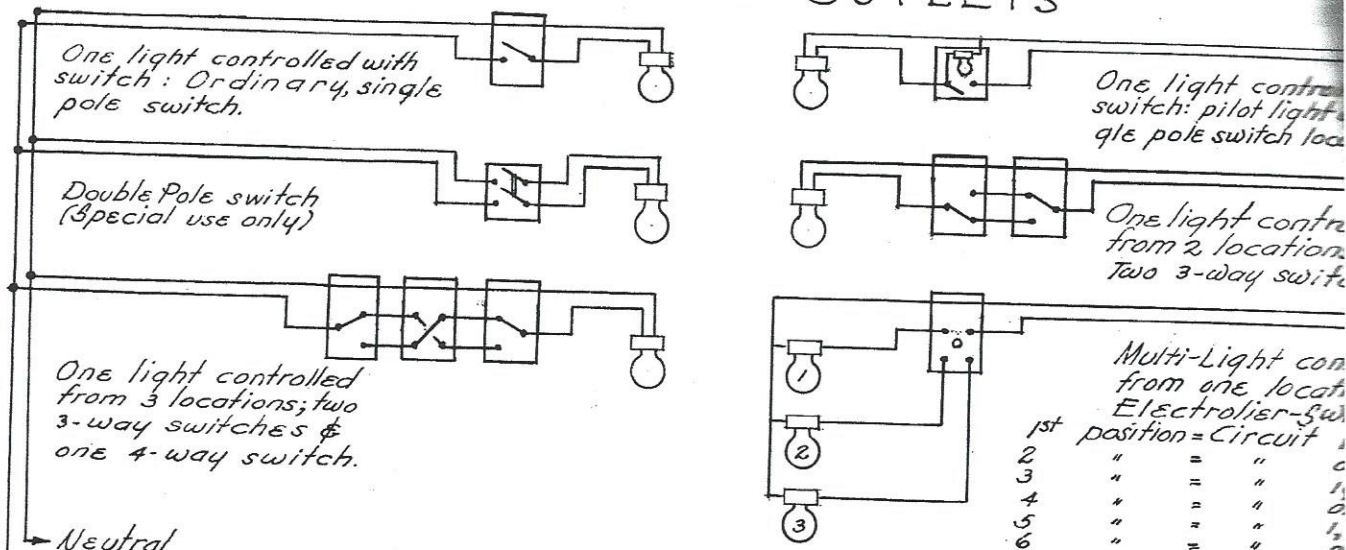


Outlets & switches shown are most generally used. Number of gangs behind one wall plate on types of devices used. Symbols used are ASA standard (except those marked \*). See page on Electrical Interchangeable devices (Despard) available in various combinations using any 1, 2 or 3 gang: switch, convenience outlet, radio outlet, pilot light, bell button, in one gang. Combined

### TYPES and SIZES of OUTLETS



### HEIGHT of OUTLETS



### SWITCH WIRING DIAGRAMS

Data by Mongitore & Moesel, Consulting Engineers, N.Y.C.