



Available in 38, 40 and 50 Gallon Tall – 40 and 50 Gallon Short Gas Models

- **8-Year* Limited Tank and Parts Warranty with a Professional Installation.**
- **With ProtectionPlus™ the 8-Year Limited Tank Warranty Becomes 12 Years!**

Guardian System™

- One-of-a-kind air/fuel shut-off device offers double protection
- Maintenance free – no filter to clean
- Standard replacement parts

Environmentally Friendly Burner

- Low NOx design for low nitrous oxide emissions

Self-Cleaning

- EverKleen™ patented system fights sediment build-up
- Reduces fuel costs
- Provides more hot water

Easy to Light

- No matches required

Energy Efficient

- More hot water at low operating cost

High Altitude Compliant

- All models are certified for applications up to 6,000 feet above sea level. Some models are certified up to 10,200 feet above sea level. Check factory for listings

Longer Life

- Patented magnesium anode rod design incorporates a special resistor that protects the tank from rust

Plus...

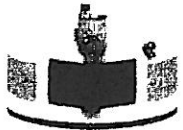
- Brass drain valve and temperature and pressure relief valve are included
- Meets or exceeds National Appliance Energy Conservation Act (NAECA) requirements

*See Residential Warranty Information Brochure for complete warranty information.

Energy Factor and Average Annual Operating Costs based on D.O.E. (Department of Energy) test procedures. D.O.E. national average fuel rate natural gas \$1.218/therm; LP \$1.87/gallon.



Get
4 MORE YEARS
with ProtectionPlus™



DESCRIPTION			FEATURES					ROUGHING IN DIMENSIONS (SHOWN IN INCHES)										ENERGY INFO.	
TYPE	GAL. CAP.	MODEL NUMBER	GAS INPUT IN THOUS. BTU/HR		RECOVERY IN G.P.H. 90° RISE		FIRST HOUR DEL. G.P.H.	HT. TO VENT A	TANK H.T. B	D.I.A. C	HT. TO GAS CONN. D	VENT SIZE E	WATER CONN. CTR. F	HT. TO SIDE TAP G	WATER CONN. H	SHR. WT. (LBS)	ENERGY FACTOR I	AVG. ANNUAL OPER. COST NAT. J	
			NAT. LP	NAT. LP	NAT. LP	NAT. LP													
TALL	40	P2-40 PROF	38	32	38.4	32.3	73	61-3/4	58-3/8	18-1/8	14-1/2	3	8	52-1/4	3/4	120	0.59	\$309	
	38	PH2-40 PROF	40	34	40.4	34.3	68	61-1/4	57-3/4	19-3/4	14-1/2	3	8	52-1/4	3/4	125	0.60	\$304	
	40	RUG PRO40-40F	40	34	40.4	34.3	68	63-1/4	59-3/4	21	14-1/2	3	8	53-1/2	3/4	135	0.62	\$294	
	50	P2-50 PROF	38	36	38.4	36.4	90	61-1/2	58-1/4	20-1/8	14-1/2	3	8	51-3/8	3/4	130	0.53	\$315	
	50	PH2-50-40 PROF	40	36	40.4	36.4	83	61-1/2	58	21-3/4	14-1/2	3	8	52-1/2	3/4	150	0.53	\$315	
	50	RUG PRO50-40F	40	36	40.4	36.4	83	62-1/4	58-3/4	23	14-1/2	3	8	52-1/2	3/4	165	0.62	\$294	
	50	RUG PRO50-50F	50	—	50.6	—	83	62	58	21-3/4	14-1/2	4	8	52-1/2	3/4	150	0.53	\$315	
SHORT	40	PH2-40SPROF	40	36	40.4	36.4	72	53-7/8	50-1/2	20-1/8	14-1/2	3	8	44	3/4	130	0.53	\$309	
	40	P2R-40SPROF	40	36	40.4	36.4	72	53-7/8	50-1/2	23	14-1/2	3	8	44	3/4	135	0.62	\$294	
	50	PH2-50SPROF	40	38	40.4	36.4	84	54-1/4	49-3/4	22-1/4	14-1/2	3	8	44	3/4	158	0.53	\$309	

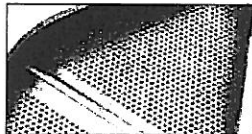
SPECIFY LP GAS WHEN ORDERING. Add "P" suffix to the model number. Example: RUG PRO40-40PF.
• 40 ng/J NOx Compliant

Ruud Guardian System Features...



Exclusive Combustion Shut-off System

Should a spill incident occur, the Guardian System shuts off the gas supply and the air supply preventing a sustained vapor burn in the combustion chamber.



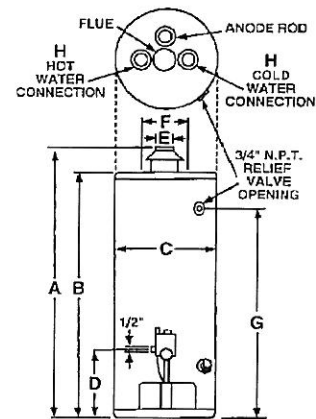
Flame Arrestor Plate

A specially-designed flame arrestor prevents ignition of vapors outside the combustion chamber.



Maintenance Free

Superior air filtration prevents the flame arrestor from becoming clogged by lint, dust and oil.



These units are designed to meet or exceed ANSI (American National Standards Institute) requirements and have been tested according to D.O.E. test procedures and meet or exceed the energy efficiency requirements of NAECA, ASHRAE standard 90, ICC Code and all state energy efficiency performance criteria for energy consuming appliances.

Before purchasing this appliance, read important energy cost and efficiency information available from your supplier.

Exclusive Professional Installation Warranty

When this Ruud PROFESSIONAL water heater is installed by a licensed contractor, the consumer can upgrade his limited tank and parts warranty from 6 to 8 years by returning to Ruud the warranty registration card and a copy of the contractor's invoice.

This Ruud exclusive warranty upgrade feature enhances your value as a plumbing professional. A professional installation is a better installation. Refer to the warranty certificate enclosed with each heater for specific details.

PROTECTIONPLUS™
8 YEAR LIMITED TANK WARRANTY BECOMES 12

For more details, see form 101-7.

In keeping with its policy of continuous progress and product improvement, Ruud reserves the right to make changes without notice.

Ruud Water Heating • 101 Bell Road, Montgomery, Alabama 36117-4305 • www.ruud.com

PRINTED IN U.S.A.

03/05 WP

FORM NO. 101R-14 Rev. 10

!! Warnings and Cautions !!

Before inspecting, diagnosing, repairing or operating any water heater, be sure to examine all of the safety and warning labels on the tank. Follow the instructions on these warning labels. Read and understand the Use and Care Manual that was shipped with the water heater. Failure to do so can result in unsafe operation of the water heater resulting in property damage, bodily injury, or death. Should you have any problems reading or following the instructions in the Use and Care Manual, seek the help of a licensed and qualified professional.

The Rheem Guardian System gas water heater is a flammable vapor ignition resistant (FVIR) product. It has been design, tested, and certified to ANSI Standard Z21.10.1-2001; Part 2.35. It has a one-time use thermal release device. When the temperature inside the combustion chamber exceeds normal limits, the safety device will activate. This will render the water heater inoperable. You may be able to relight the pilot, and may get main burner; but the flame will extinguish with a few seconds. The thermal device positively shuts off all make-up air to the water heater's combustion chamber. This will prevent any further sustained combustion by the pilot flame or the main burner.

In accordance with paragraph 8.1.10.1 of the 2002 National Fuel Gas Code and paragraph 305.3 of the 2003 International Fuel Gas Code, this product does not have to be placed on an 18 inch stand if installed in a residential garage. Local (city, state, county) codes may override or apply. Please check them.

Copyright 2003, Rheem Manufacturing Company

RHEEM
WATER
HEATERS

RUUD
WATER
HEATERS



Technical Support Line
Service Department
1-800-HEATER3
1-800-432-8373

2600 Gunter Park Drive East
Montgomery, AL 36109-1413
FAX (334) 260-1341
Email: Techserv@rheem.com

The 2002 edition of the National Fuel Gas Code has been changed to reflect the new flammable vapor ignition resistant (FVIR) product. The FVIR product is a new American National Standards Institute (ANSI) testing standard that will prevent a water heater from igniting flammable vapors outside the combustion chamber. The new ANSI standard Z21.10.1-2001 will go into effect July 1, 2003. All 30, 40 and 50 gallon conventional vent gas-fired water heaters, both propane and natural gas, will have to meet the FVIR standard. PowerVent models and all remaining residential gas products such as 75 and 100 gallons and direct vent models will follow. The 2002 National Fuel Gas Code reads as follows:

8.1.10 Installation in residential garages

8.1.10.1 Gas utilization equipment in residential garages and in adjacent spaces that open to the garage and are not part of the living space of a dwelling unit shall be installed so that all burners and burner ignition devices are located not less than 18 in. (460mm) above the floor unless listed as flammable vapor ignition resistant.

The 2003 International Fuel Gas Code has also been changed to reflect the exception:

305.3 Elevation of Ignition Source:

Exception: Elevation of ignition sources are not required for appliances that are listed as flammable vapor resistant and for installation without elevation.

Do you have to put an FVIR compliant water heater on an 18-inch stand? The answer to the question will depend on the local, city, country or state codes that govern the installation of gas water heaters where you live. IF the local codes advise you to put the gas water heater on an 18inch stand, then you must do so.

You should comply with the local codes and governing agencies until their codes relating to 18-inch stands have changed. If in doubt, please contact your local plumbing inspector.