

## Locations

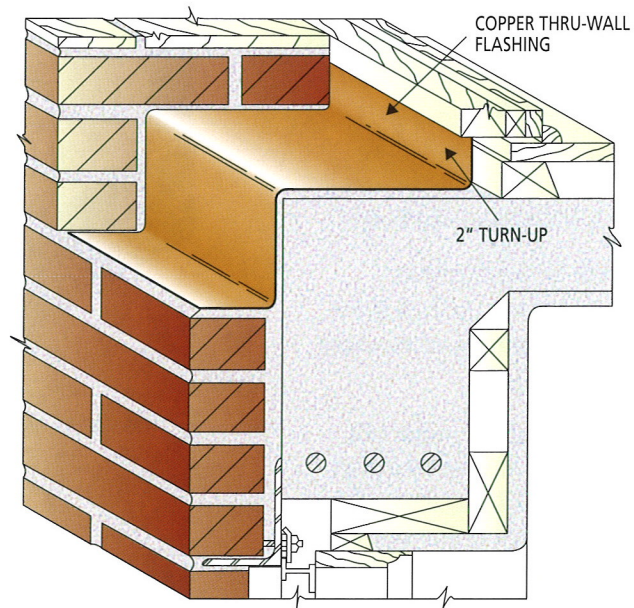
**Spandrels** – Shallow spandrels and bar joists may be flashed with a single, continuous copper flashing on top of the spandrel under the masonry at the rough floor-line. The inner edge of the flashing turns up two inches (2") against the interior face of the masonry wall. The flashing should extend downward on the vertical face of the spandrel and horizontally through a mortar joint.

Two separate flashings should be used when flashing deep spandrels.

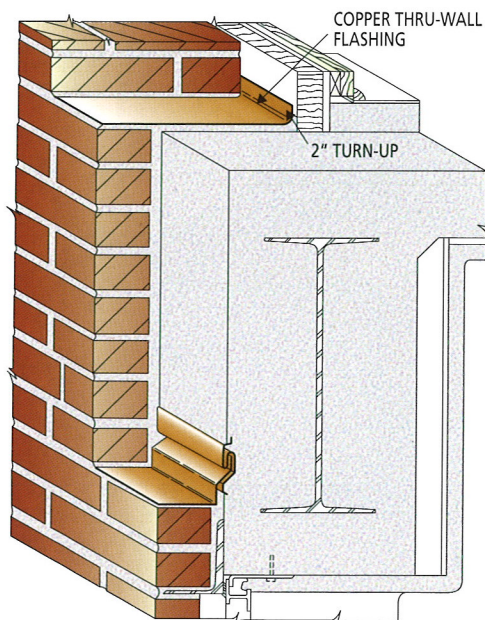
When the spandrel is encased in concrete, a reglet should be placed near the bottom of the beam so the flashing over the lintel or shelf angle does not interfere with the brick or stone anchors in the face of the spandrel. When the exterior face of a steel spandrel is fireproofed with

brick, the inner edge of the flashing over the lintel or shelf angle should turn up against the web of the beam at least two inches (2") and be sealed to it.

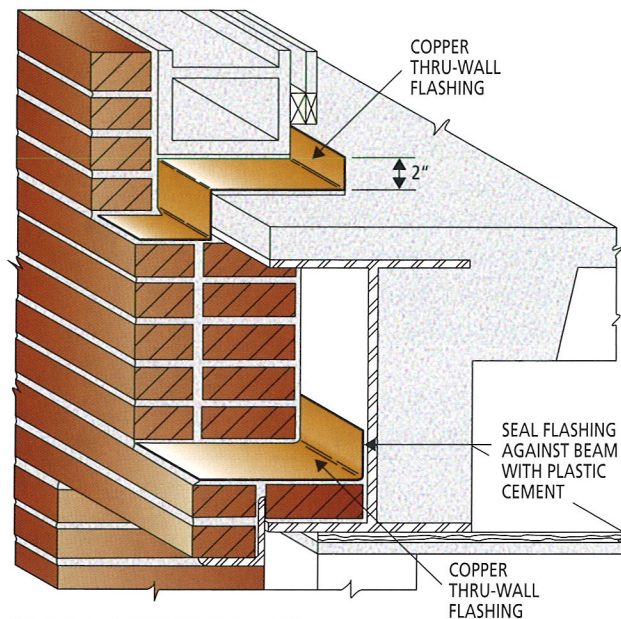
A separate, continuous flashing is placed at the floor line on top of the spandrel.



03\_WF\_02 ON SPANDRELS - SHALLOW



03\_WF\_03 ON SPANDRELS - DEEP



03\_WF\_04 ON SPANDRELS - STEEL